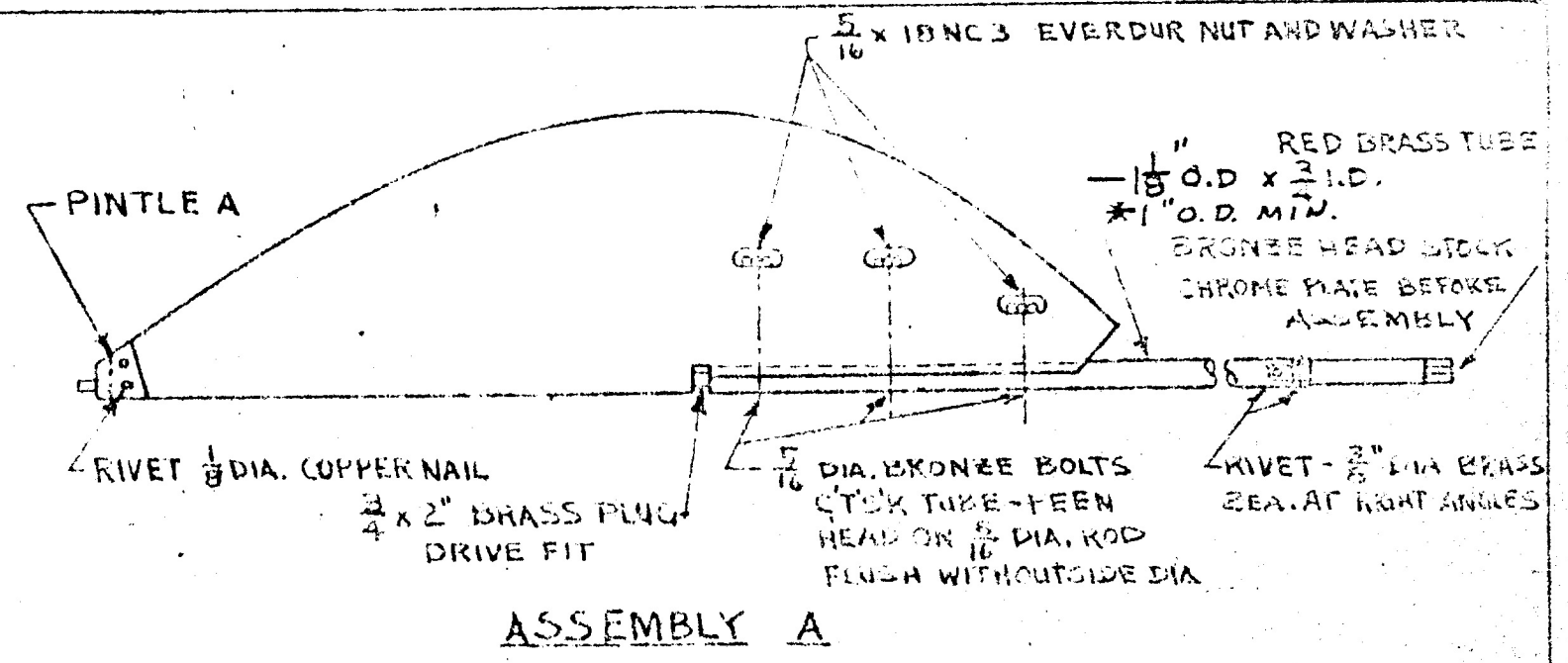
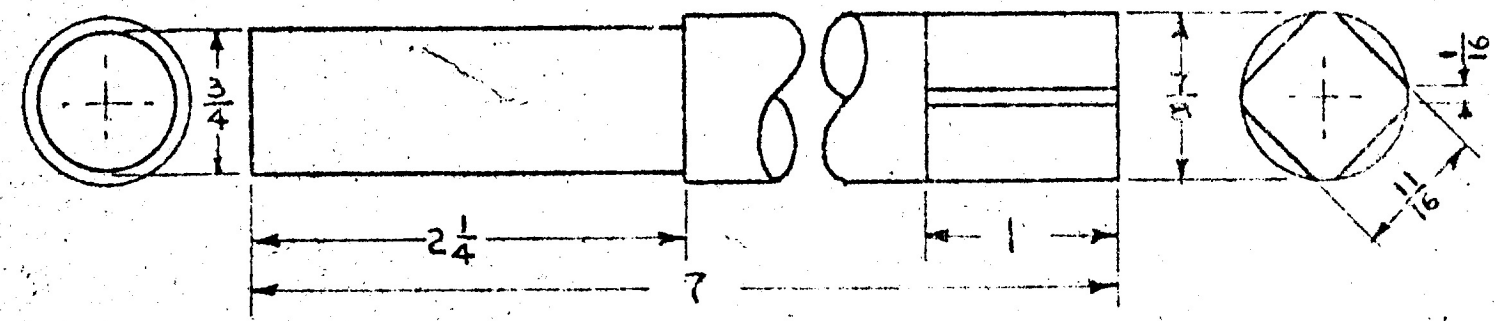


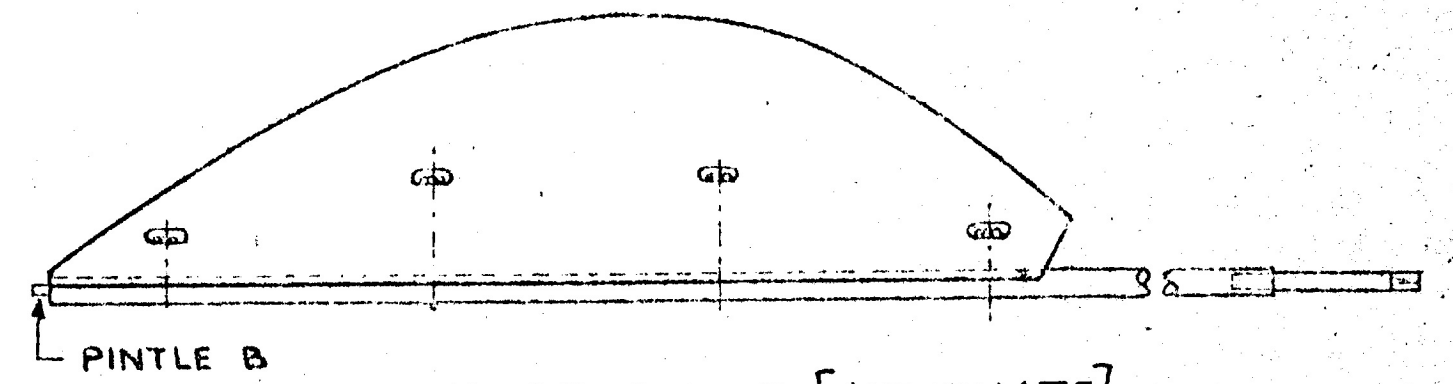
* **RUDDER** MAHOGANY * $\frac{1}{8}$ TK
SOLID OR LAMINATED



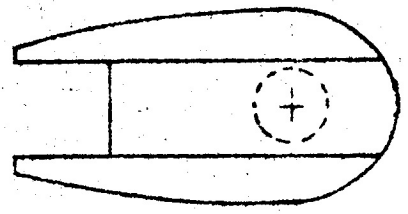
ASSEMBLY A



HEAD STOCK BRONZE

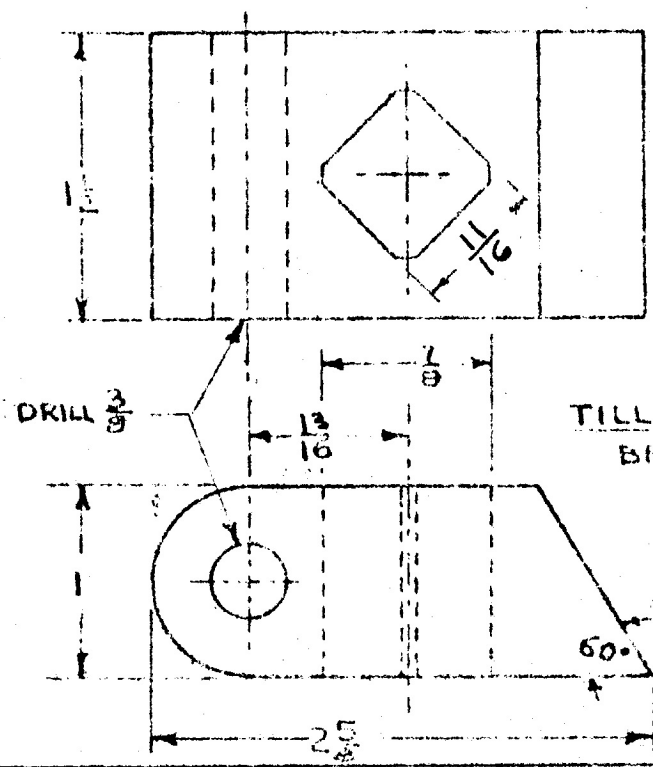
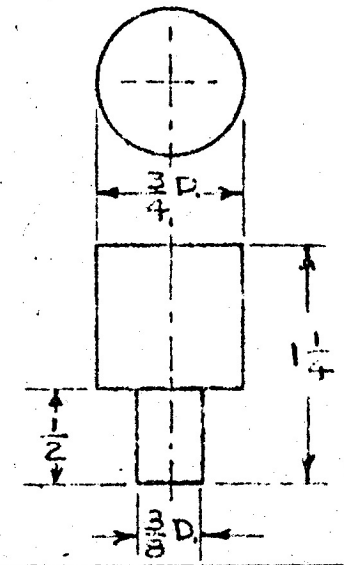
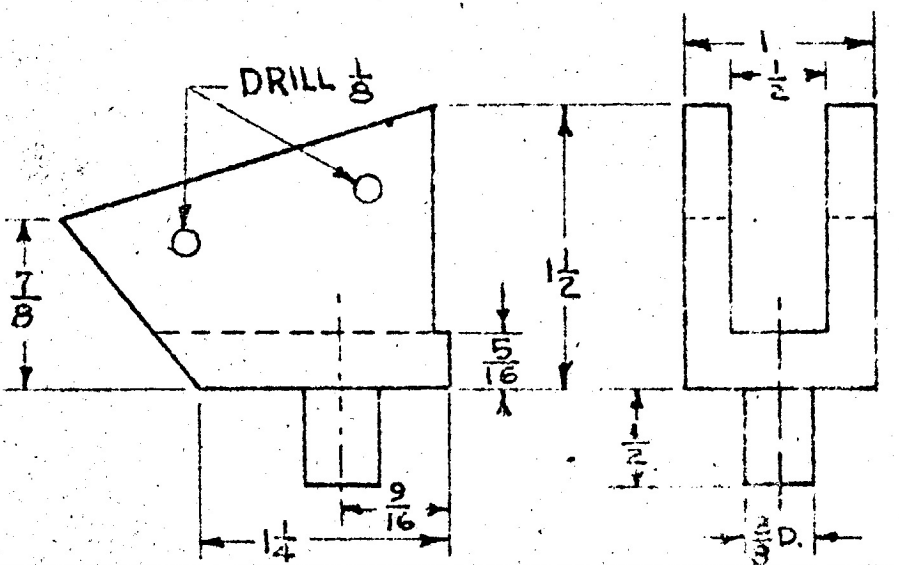


ASSEMBLY B [ALTERNATE]



PINTLE A BRONZE

PINTLE B BRONZE



TILLER HEAD BRONZE

M.C.Y.R.A. approved
10 April 1962

ASTERISK [*] SHOWS REQUIREMENTS.

RUDDER
MERCURY CLASS YACHT
DRAWN BY WLM 9 Nov 1957 DWG No 5